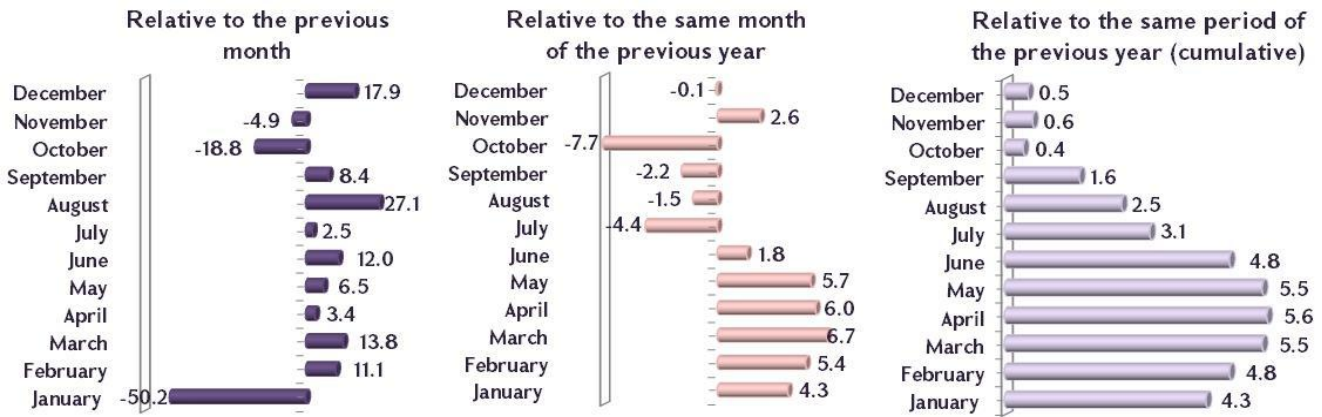


INDICATOR OF ECONOMIC ACTIVITY, percent



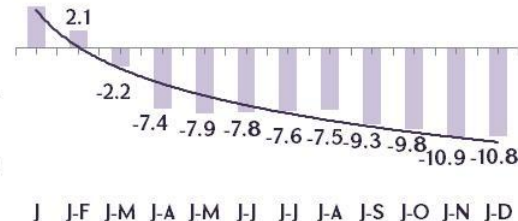
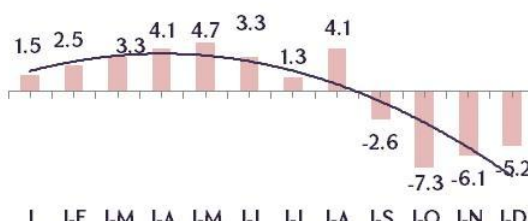
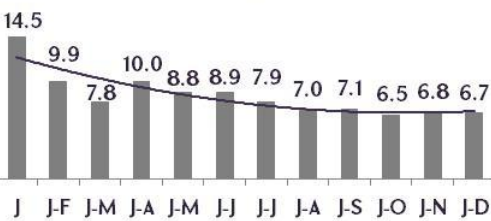
PRODUCTION AND SERVICES

Growth compared to the same period of the previous year, percent

Industrial production

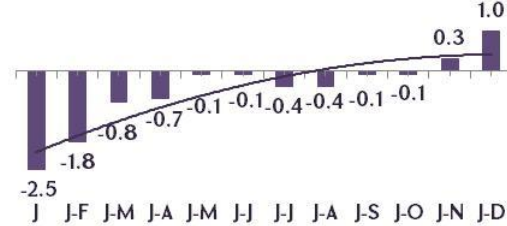
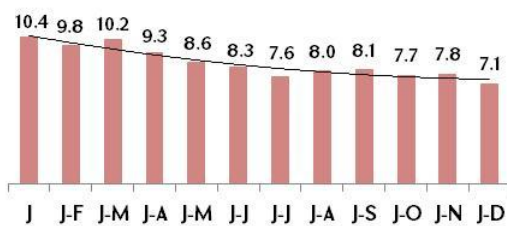
Agricultural production

Construction



Services

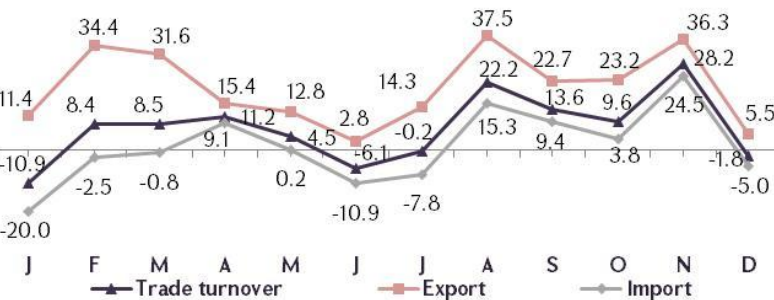
Trade turnover



EXTERNAL TRADE

2016, growth compared to the same month of the previous year, %

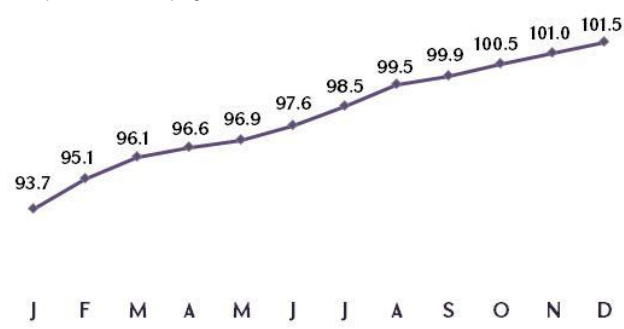
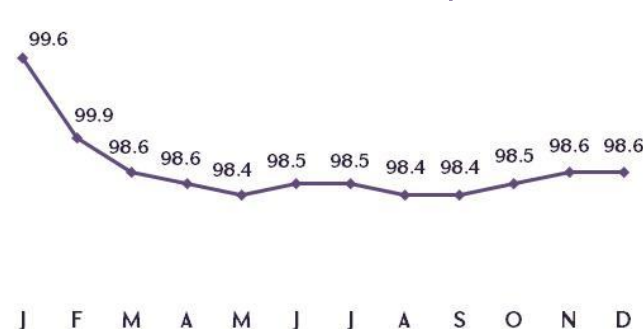
2016 January-December



CONSUMER PRICE INDEX

PRODUCER PRICE INDEX

2016, compared to the same period of the previous year (cumulative), percent



OPERATIONAL INFORMATION OF THE MONITORING OF INDUSTRIAL ORGANIZATIONS IMPLEMENTED BY THE MINISTRY OF ECONOMIC DEVELOPMENT AND INVESTMENTS

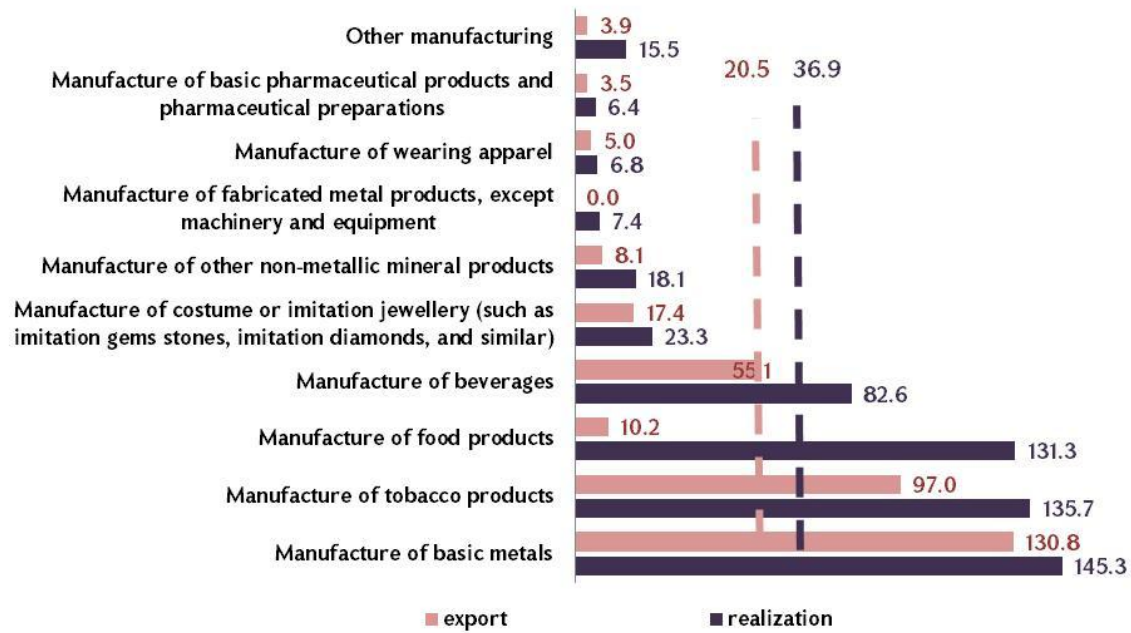
Growth (in current prices), relative to the same period of the previous year, %



Export to realization, %

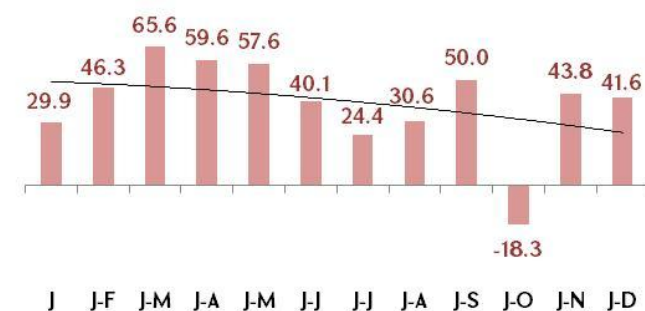


MANUFACTURING
Volumes of the export and realization, 2016 january-december, billion drams



Manufacturing export growth (in current prices), %

CIS countries



Non-CIS countries

